

Spieth &  
Satow

Auctioneers & Real Estate

**AUCTION**

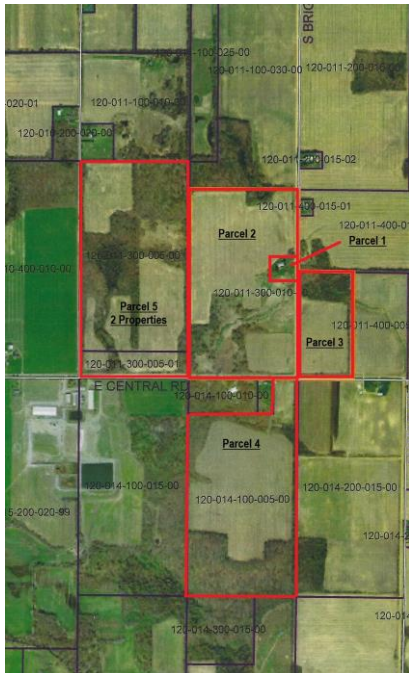
**Wednesday, December 2<sup>nd</sup> @ 6:00 p.m.**

**REAL ESTATE**

**240 Acres \* 5 Parcels**

From Downtown Quincy, go south on main street 4.2 miles to Fisher Road then turn left (east) 1.5 miles to Briggs Road and turn right (south) .8 miles to the auction site at 272 S Briggs Road in...

**Quincy, Michigan**



This property will be selling in the multi parcel system with five different parcels available.

**Parcel 1 : House & 1.98 +/- Acres**  
**Parcel 2: 68.02 +/- Acres, 43.07 +/- Tillable**  
**Parcel 3: 20 +/- Acres, 13.91 +/- Tillable**  
**Parcel 4: 69.25 +/- Acres, 43.18 Tillable**  
**Parcel 5: 80 +/- Acres, 42.09 Tillable**

**Josephine Wineland Living Trust Estate**

**FOR MORE INFORMATION:** Contact Darin Spieth at 517-398-6060, Dan Satow at 517-617-1104 or log onto [www.spiethandsatow.com](http://www.spiethandsatow.com).

**INSPECTION:** Auction day at 5:00 p.m. or by appointment with the auctioneer.

**REAL ESTATE TERMS:** The high bidder on the properties will be required to sign the appropriate purchase agreement and to deposit 10% down (unless prior arrangements are made with the auctioneer), balance at closing within 30 days. Statements made auction day take precedence over all printed and previously dispersed information. Property is selling AS-IS. Bidding on the property is not subject to or conditional to financing, inspections or bank approvals of any kind. Splits are subject to township approval. Buyer responsible for fees related to PA-116 removal if applicable.

Log onto [www.spiethandsatow.com](http://www.spiethandsatow.com)  
for more photos and information



**Darin Spieth**  
Auctioneer

**Daniel Satow**  
Auctioneer

6 South Howell  
Hillsdale, MI 49242

517-439-2528  
Fax 517-279-4899  
Hillsdale: 517-398-6060